



**Water Monitoring Result at M5B - Central Cooling Water Intake Group  
Mid-Flood Tide**

Date	Time	Weather Condition	Sampling Depth m	Water Temperature °C		pH		Salinity ppt		DO Saturation %		DO mg/L		Turbidity NTU		Suspended Solids mg/L								
				Value	Average	Value	Average	Value	Average	Value	Average	Value	Average	Value	Average	Value	Average							
2/2/15	16:40	Fine	Middle	3.5	17.50	17.50	17.60	8.11	8.11	8.11	31.61	31.61	31.60	93.3	93.3	92.8	7.36	7.36	7.31	3.33	3.34	3.42	9	9.00
	16:42		Middle	3.5	17.70	17.70	17.60	8.11	8.11	8.11	31.59	31.59	31.60	92.7	91.8	92.8	7.27	7.23	7.31	3.47	3.55	3.42	9	
5/2/15	18:42	Cloudy	Middle	3.5	16.00	16.00	15.95	7.82	7.82	7.82	31.74	31.74	31.75	82.3	82.6	82.7	6.71	6.73	6.74	5.77	5.84	5.70	6	5.50
	18:43		Middle	3.5	15.90	15.90	15.95	7.82	7.82	7.82	31.75	31.75	31.75	83.0	82.9	82.7	6.77	6.75	6.74	5.63	5.56	5.70	5	
7/2/15	20:19	Cloudy	Middle	3.5	16.70	16.70	16.70	7.78	7.78	7.78	30.98	30.98	30.75	78.1	79.9	78.1	6.79	6.80	6.73	5.88	5.65	5.64	4	5.00
	20:20		Middle	3.5	16.70	16.70	16.70	7.78	7.78	7.78	30.51	30.51	30.75	78.0	76.2	78.1	6.77	6.55	6.73	5.54	5.49	5.64	6	
9/2/15	19:41	Cloudy	Middle	3.5	16.10	16.10	16.15	8.01	8.01	8.01	31.69	31.93	31.90	85.0	85.6	85.2	6.88	6.92	6.89	7.73	7.71	7.69	9	8.50
	19:42		Middle	3.5	16.20	16.20	16.15	8.00	8.00	8.01	31.97	32.01	31.90	85.2	85.0	85.2	6.89	6.88	6.89	7.69	7.63	7.69	8	
11/2/15	11:15	Fine	Middle	3.0	17.60	17.60	17.70	8.03	8.03	8.03	31.52	31.52	31.52	81.3	82.2	82.0	6.42	6.49	6.47	5.15	5.12	5.13	6	6.00
	11:17		Middle	3.0	17.80	17.80	17.70	8.03	8.03	8.03	31.52	31.52	31.52	82.3	82.0	82.0	6.50	6.48	6.47	5.11	5.14	5.13	6	
13/2/15	13:42	Fine	Middle	3.5	17.80	17.80	17.80	8.00	8.00	8.01	31.32	31.32	31.34	81.4	82.2	81.6	6.43	6.49	6.44	3.51	3.49	3.50	6	6.00
	13:44		Middle	3.5	17.80	17.80	17.80	8.01	8.01	8.01	31.35	31.35	31.34	81.4	81.3	81.6	6.43	6.42	6.44	3.49	3.50	3.50	6	
16/2/15	14:09	Cloudy	Middle	3.0	18.30	18.30	18.35	8.06	8.06	8.06	31.39	31.39	31.39	83.9	85.0	84.7	6.54	6.62	6.60	3.31	3.30	3.30	5	4.50
	14:11		Middle	3.0	18.30	18.50	18.35	8.06	8.06	8.06	31.39	31.39	31.39	85.2	84.7	84.7	6.63	6.59	6.60	3.29	3.29	3.30	4	
18/2/15	15:04	Fine	Middle	3.0	17.80	17.80	18.00	8.12	8.12	8.12	31.42	31.42	31.42	89.5	88.5	88.3	7.00	6.92	6.88	3.79	3.79	3.78	4	4.00
	15:06		Middle	3.0	18.20	18.20	18.00	8.12	8.12	8.12	31.41	31.41	31.42	88.2	87.1	88.3	6.89	6.71	6.88	3.78	3.76	3.78	4	
24/2/15	7:08	Fine	Middle	3.0	17.90	17.90	17.95	8.12	8.12	8.12	31.14	31.14	31.15	71.1	71.2	71.1	5.59	5.61	5.59	6.42	6.38	6.39	5	5.00
	7:09		Middle	3.0	18.00	18.00	17.95	8.12	8.12	8.12	31.15	31.15	31.15	71.2	70.9	71.1	5.60	5.57	5.59	6.36	6.38	6.39	5	
26/2/15	11:19	Fine	Middle	3.0	18.80	18.80	18.85	8.10	8.10	8.10	31.42	31.42	31.40	75.9	74.6	73.8	5.86	5.76	5.70	5.67	5.64	5.63	5	6.00
	11:21		Middle	3.0	18.90	18.90	18.85	8.10	8.10	8.10	31.38	31.38	31.40	73.5	71.3	73.8	5.67	5.50	5.70	5.61	5.60	5.63	7	
28/2/15	10:10	Cloudy	Middle	3.0	18.10	18.10	18.10	8.25	8.25	8.26	32.19	32.19	32.18	85.2	85.8	85.6	6.64	6.68	6.66	4.16	4.18	4.22	5	5.50
	10:12		Middle	3.0	18.10	18.10	18.10	8.26	8.26	8.26	32.16	32.16	32.18	85.0	86.2	85.6	6.62	6.71	6.66	4.27	4.28	4.22	6	

Remarks:

Single underline denotes exceedance over Action Level.

Double underline denotes exceedance over Limit Level.

With respect to the suspension of marine construction activities under the contract during Chinese New Year Holiday, the water quality monitoring event on 20 February 2015 during flood tide and ebb tide were temporarily suspended.



**Water Monitoring Result at M5B - Central Colling Water Intake Group  
Mid-Ebb Tide**

Date	Time	Weather Condition	Sampling Depth		Water Temperature		pH			Salinity		DO Saturation		DO		Turbidity		Suspended Solids						
					°C		-			ppt		%		mg/L		NTU		mg/L						
					Value	Average	Value	Average	Value	Average	Value	Average	Value	Average	Value	Average	Value	Average	Value	Average				
3/2/15	1:51	Cloudy	Middle	3.0	16.50	16.50	16.55	7.95	7.95	7.95	31.47	31.47	31.44	95.0	94.5	96.2	7.66	7.62	7.76	5.16	5.26	5.19	6	6.50
	1:52		Middle	3.0	16.60	16.60		7.95	7.95		31.40	31.40		97.9	97.5		7.89	7.86		5.20	5.13		7	
5/2/15	13:32	Fine	Middle	3.5	17.00	17.00	17.05	8.12	8.12	8.12	31.53	31.53	31.54	88.6	88.7	88.4	7.07	7.07	7.05	3.73	3.72	3.72	4	3.50
	13:34		Middle	3.5	17.10	17.10		8.12	8.12		31.54	31.54		88.1	88.0		7.03	7.02		3.72	3.72		3	
7/2/15	13:35	Fine	Middle	3.0	16.90	16.90	16.95	8.16	8.16	8.16	31.64	31.64	31.64	89.8	90.1	89.9	7.18	7.19	7.18	4.11	4.13	4.11	6	6.00
	13:37		Middle	3.0	17.00	17.00		8.16	8.16		31.63	31.63		89.6	90.0		7.16	7.18		4.11	4.09		6	
9/2/15	13:55	Fine	Middle	3.0	17.00	17.00	17.05	8.13	8.13	8.13	31.61	31.61	31.62	87.4	87.9	87.7	6.97	7.00	6.99	4.98	4.97	5.00	5	5.50
	13:57		Middle	3.0	17.10	17.10		8.13	8.13		31.62	31.62		87.5	88.0		6.98	7.01		4.99	5.05		6	
11/2/15	16:00	Fine	Middle	3.5	16.90	16.90	16.95	8.05	8.05	8.05	31.53	31.53	31.52	81.7	81.8	81.7	6.54	6.54	6.54	2.47	2.45	2.44	4	4.00
	16:02		Middle	3.5	17.00	17.00		8.05	8.05		31.51	31.51		81.5	81.8		6.52	6.54		2.43	2.40		4	
13/2/15	19:44	Cloudy	Middle	3.5	16.80	16.80	16.80	7.80	7.80	7.80	31.64	31.63	31.77	82.5	83.2	82.6	6.59	6.65	6.60	3.97	3.92	3.91	7	6.50
	19:45		Middle	3.5	16.80	16.80		7.80	7.80		31.91	31.91		82.5	82.0		6.59	6.56		3.89	3.84		6	
16/2/15	0:32	Foggy	Middle	3.0	18.30	18.30	18.30	7.82	7.82	7.82	31.76	31.76	31.76	78.7	79.9	79.7	6.12	6.22	6.20	7.01	6.99	6.98	6	6.50
	0:33		Middle	3.0	18.30	18.30		7.82	7.82		31.76	31.76		80.2	80.1		6.24	6.23		6.96	6.94		7	
18/2/15	11:36	Fine	Middle	3.0	17.50	17.50	17.50	8.19	8.19	8.19	31.74	31.74	31.75	89.6	89.2	89.5	7.06	7.07	7.06	4.11	4.12	4.13	4	4.00
	11:37		Middle	3.0	17.50	17.50		8.19	8.19		31.76	31.76		89.9	89.1		7.08	7.02		4.14	4.16		4	
24/2/15	16:02	Fine	Middle	3.0	19.10	19.10	19.15	8.10	8.10	8.10	31.46	31.46	31.43	75.5	74.7	74.6	5.80	5.73	5.71	4.22	4.22	4.22	4	4.50
	16:04		Middle	3.0	19.20	19.20		8.10	8.10		31.40	31.40		74.3	73.8		5.71	5.61		4.22	4.23		5	
26/2/15	18:58	Cloudy	Middle	3.5	20.10	20.10	20.15	7.77	7.77	7.78	31.56	31.59	31.72	83.6	84.2	83.8	6.28	6.32	6.29	5.13	5.10	5.03	4	5.00
	18:59		Middle	3.5	20.20	20.20		7.78	7.78		31.87	31.87		83.8	83.5		6.30	6.27		5.08	4.81		6	
28/2/15	20:01	Cloudy	Middle	3.5	19.30	19.30	19.35	7.80	7.80	7.81	32.75	32.75	32.75	82.4	83.3	82.6	6.26	6.32	6.27	3.93	3.90	3.89	5	6.00
	20:02		Middle	3.5	19.40	19.40		7.81	7.81		32.75	32.75		82.5	82.2		6.25	6.23		3.95	3.79		7	

Remarks:  
 Single underline denotes exceedance over Action Level.  
 Double underline denotes exceedance over Limit Level.  
 With respect the suspension of marine construction activities under the contract during Chinese New Year Holiday, the water quality monitoring event on 20 February 2015 during flood tide and ebb tide were temporarily suspended.



**Water Monitoring Result at Culvert J - Reference Station  
Mid-Flood Tide**

Date	Time	Weather Condition	Sampling Depth m	Water Temperature °C		pH		Salinity ppt		DO Saturation %		DO mg/L		Turbidity NTU		Suspended Solids mg/L								
				Value	Average	Value	Average	Value	Average	Value	Average	Value	Average	Value	Average	Value	Average							
2/2/15	16:45	Fine	Middle	3.0	17.50	17.50	17.45	8.03	8.03	8.03	28.77	28.77	28.77	77.3	77.8	77.4	6.24	6.27	6.24	8.33	8.27	8.26	6	5.50
	16:47		Middle	3.0	17.40	17.40		8.03	8.03		28.77	28.77		77.3	77.0		6.24	6.21		8.23	8.19		5	
5/2/15	18:50	Cloudy	Middle	3.0	16.00	16.00	16.00	7.85	7.85	7.85	28.90	28.90	28.90	74.8	76.3	75.5	6.20	6.32	6.25	10.53	10.50	10.48	9	8.50
	18:51		Middle	3.0	16.00	16.00		7.85	7.85		28.90	28.90		75.7	75.0		6.27	6.22		10.48	10.41		8	
7/2/15	20:27	Cloudy	Middle	3.0	16.80	16.80	16.80	7.85	7.85	7.85	28.79	28.79	28.78	63.1	63.4	63.0	5.24	5.27	5.24	12.50	12.03	11.89	6	6.50
	20:28		Middle	3.0	16.80	16.80		7.84	7.84		28.77	28.77		62.3	63.1		5.20	5.25		11.64	11.40		7	
9/2/15	16:50	Cloudy	Middle	3.0	16.10	16.20	16.18	8.02	8.02	8.02	31.60	31.61	31.65	80.4	80.9	81.2	6.52	6.56	6.58	8.48	8.52	8.55	11	11.00
	16:51		Middle	3.0	16.20	16.20		8.02	8.02		31.71	31.69		81.8	81.6		6.63	6.61		8.56	8.65		11	
11/2/15	11:20	Fine	Middle	3.0	17.00	17.00	17.05	8.07	8.07	8.07	31.23	31.23	31.23	83.7	83.6	83.6	6.70	6.70	6.70	4.25	4.29	4.29	6	5.50
	11:22		Middle	3.0	17.10	17.10		8.07	8.07		31.23	31.23		83.8	83.4		6.71	6.67		4.31	4.30		5	
13/2/15	13:35	Fine	Middle	3.0	18.20	18.20	18.30	7.91	7.91	7.91	29.59	29.59	29.58	73.4	74.4	74.3	5.79	5.86	5.85	3.37	3.37	3.37	7	6.50
	13:37		Middle	3.0	18.40	18.40		7.91	7.91		29.57	29.57		74.4	74.8		5.85	5.89		3.37	3.38		6	
16/2/15	14:03	Cloudy	Middle	2.5	18.80	18.80	18.85	8.02	8.02	8.02	30.46	30.46	30.45	81.2	81.2	80.8	6.28	6.27	6.25	6.04	5.94	5.96	5	5.50
	14:05		Middle	2.5	18.90	18.90		8.02	8.02		30.44	30.44		80.5	80.3		6.22	6.21		5.93	5.93		6	
18/2/15	15:10	Fine	Middle	3.0	17.70	17.70	17.80	8.11	8.11	8.11	31.27	31.27	31.27	77.0	77.7	77.7	6.07	6.12	6.12	3.82	3.79	3.70	4	3.50
	15:12		Middle	3.0	17.90	17.90		8.11	8.11		31.26	31.26		77.9	78.1		6.13	6.15		3.64	3.54		3	
24/2/15	7:05	Fine	Middle	3.0	18.00	18.00	18.00	8.05	8.05	8.05	29.38	29.38	29.38	61.7	61.2	61.3	4.90	4.86	4.87	8.16	8.15	8.22	7	6.50
	7:07		Middle	3.0	18.00	18.00		8.04	8.04		29.38	29.38		61.3	60.8		4.87	4.83		8.28	8.30		6	
26/2/15	11:15	Fine	Middle	3.0	19.10	19.20	19.23	8.07	8.07	8.07	31.08	31.08	31.05	72.5	70.7	70.8	5.57	5.43	5.43	7.01	6.97	6.89	7	7.50
	11:17		Middle	3.0	19.30	19.30		8.07	8.07		31.02	31.02		69.5	70.5		5.33	5.40		6.76	6.82		8	
28/2/15	10:05	Cloudy	Middle	2.5	18.40	18.40	18.50	8.14	8.14	8.14	29.99	29.99	29.99	77.7	77.1	77.0	6.09	6.04	6.03	7.64	7.61	7.61	7	7.50
	10:07		Middle	2.5	18.60	18.60		8.14	8.14		29.98	29.98		76.5	76.8		5.99	6.01		7.60	7.58		8	

With respect the suspension of marine construction activities under the contract during Chinese New Year Holiday, the water quality monitoring event on 20 February 2015 during flood tide and ebb tide were temporarily suspended.



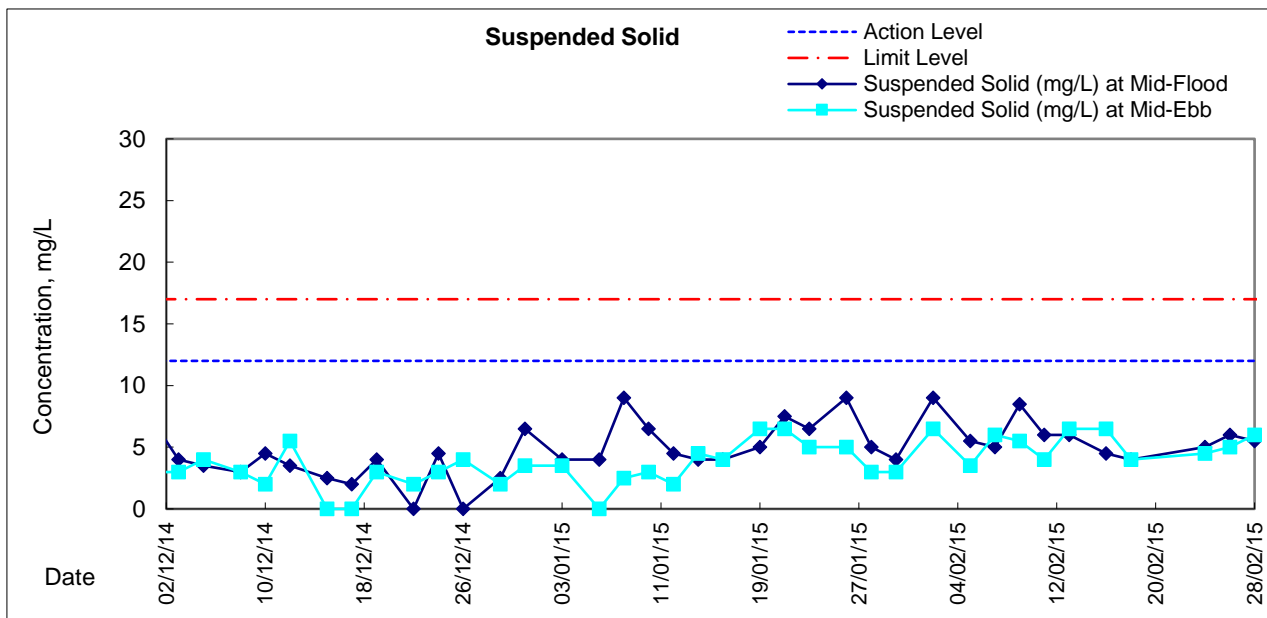
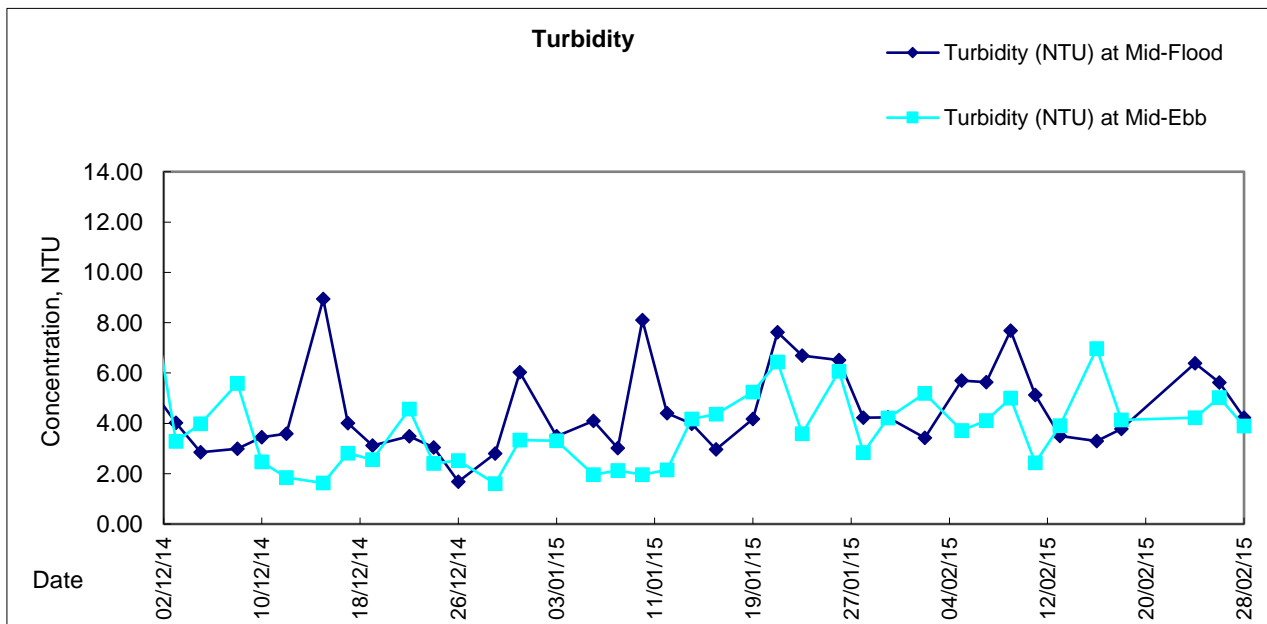
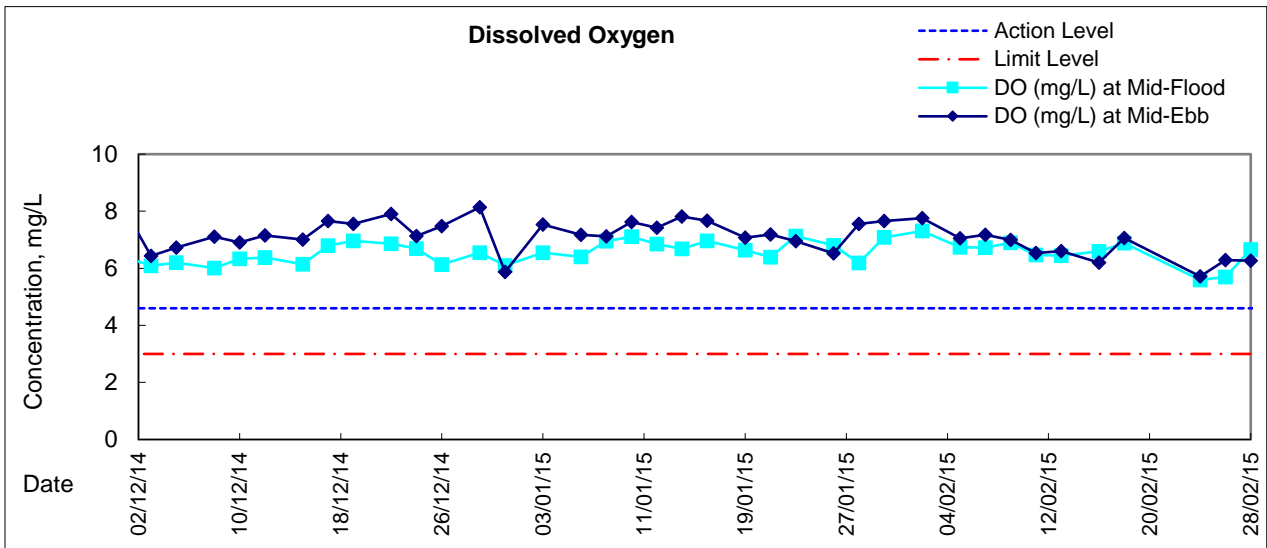
**Water Monitoring Result at Culvert J - Reference Station  
Mid-Ebb Tide**

Date	Time	Weather Condition	Sampling Depth		Water Temperature		pH			Salinity		DO Saturation		DO		Turbidity		Suspended Solids						
					°C		-			ppt		%		mg/L		NTU		mg/L						
					Value	Average	Value	Average	Value	Average	Value	Average	Value	Average	Value	Average	Value	Average	Value	Average				
3/2/15	2:04	Cloudy	Middle	3	16.60	16.60	16.60	7.97	7.97	7.97	30.24	30.24	30.25	84.7	84.8	85.1	6.87	6.88	6.90	6.82	6.23	6.52	7	7.00
	2:05		Middle	3	16.60	16.60		7.97	7.97		30.25	30.25		85.5	85.4		6.93	6.92		6.90	6.49		6.53	
5/2/15	13:25	Fine	Middle	3	17.10	17.10	17.10	7.99	7.99	7.99	29.01	29.01	29.01	67.8	68.0	68.0	5.48	5.50	5.50	9.08	9.10	9.20	8	8.00
	13:27		Middle	3	17.10	17.10		7.99	7.99		29.01	29.01		68.1	67.9		5.51	5.49		5.50	9.22		9.40	
7/2/15	12:30	Fine	Middle	3	17.10	17.10	17.15	8.15	8.15	8.15	31.62	31.62	31.62	85.4	85.9	85.6	6.81	6.84	6.82	4.34	4.29	4.28	6	6.00
	12:32		Middle	3	17.20	17.20		8.15	8.15		31.62	31.62		85.6	85.4		6.82	6.80		6.82	4.25		4.24	
9/2/15	13:50	Fine	Middle	3	17.10	17.10	17.15	8.10	8.10	8.10	31.10	31.10	31.10	82.0	82.0	81.7	6.55	6.55	6.52	5.69	5.65	5.68	8	7.50
	13:52		Middle	3	17.20	17.20		8.10	8.10		31.10	31.10		81.4	81.3		6.48	6.48		6.52	5.66		5.72	
11/2/15	15:56	Fine	Middle	4	17.50	17.50	17.50	8.04	8.04	8.05	31.43	31.43	31.44	80.9	79.6	79.2	6.41	6.30	6.27	2.93	2.92	2.92	5	4.50
	15:58		Middle	4	17.50	17.50		8.05	8.05		31.44	31.44		78.0	78.1		6.18	6.19		6.27	2.90		2.91	
13/2/15	19:52	Cloudy	Middle	3	17.00	17.00	17.00	7.86	7.86	7.86	29.07	29.07	29.08	63.0	62.2	62.4	5.12	5.05	5.07	10.02	9.96	10.01	9	9.00
	19:53		Middle	3	17.00	17.00		7.86	7.86		29.08	29.08		62.3	62.2		5.06	5.05		5.07	10.05		10.01	
16/2/15	0:44	Foggy	Middle	3	18.20	18.20	18.25	7.89	7.89	7.89	25.76	25.76	25.76	42.8	43.5	43.5	3.45	3.51	3.51	18.19	18.03	18.04	14	13.50
	0:45		Middle	3	18.30	18.30		7.88	7.88		25.75	25.75		43.9	43.7		3.54	3.52		3.51	17.98		17.96	
18/2/15	11:30	Fine	Middle	3	17.40	17.40	17.40	8.16	8.16	8.16	30.99	30.99	31.09	80.7	81.0	80.9	6.41	6.43	6.44	6.42	6.41	6.43	3	4.00
	11:32		Middle	3	17.40	17.40		8.16	8.16		31.19	31.19		80.9	81.0		6.47	6.43		6.44	6.44		6.44	
24/2/15	16:06	Fine	Middle	3	18.80	18.80	18.85	7.96	7.96	7.96	27.02	27.02	27.01	56.6	56.2	56.0	4.49	4.46	4.44	14.39	14.21	14.16	6	6.50
	16:08		Middle	3	18.90	18.90		7.95	7.95		27.00	26.99		55.9	55.3		4.43	4.38		4.44	14.02		14.00	
26/2/15	19:09	Cloudy	Middle	3	20.00	20.00	20.05	7.80	7.80	7.80	30.06	30.06	30.06	66.0	65.9	66.1	5.02	5.01	5.03	8.39	8.47	8.32	6	6.00
	19:10		Middle	3	20.10	20.10		7.79	7.79		30.06	30.06		66.1	66.4		5.03	5.05		5.03	8.24		8.16	
28/2/15	20:10	Cloudy	Middle	3	19.50	19.50	19.50	7.89	7.89	7.89	29.93	29.93	29.93	62.5	63.9	62.5	4.81	4.92	4.81	8.35	8.29	8.24	6	6.50
	20:11		Middle	3	19.50	19.50		7.89	7.89		29.93	29.93		61.3	62.3		4.72	4.79		4.81	8.24		8.09	

With respect to the suspension of marine construction activities under the contract during Chinese New Year Holiday, the water quality monitoring event on 20 February 2015 during flood tide and ebb tide were temporarily suspended.



### Graphic Presentation of Water Quality Result of M5B - Central Cooling Water Intake Groups





# Graphic Presentation of Water Quality Result of Culvert J - Reference Station

